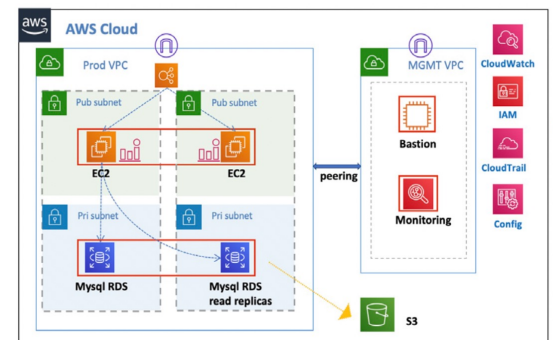
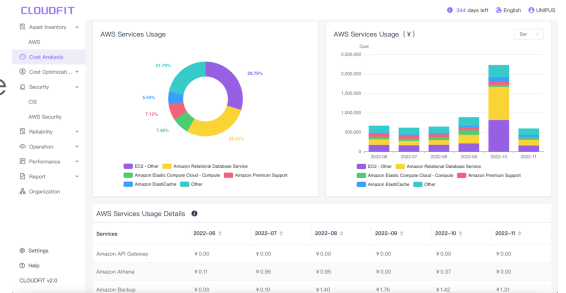


FitchBohua Managed Service



Fitch is one of the world's three major international rating agencies, headquartered in New York and London. It has more than 40 branches worldwide and employs over 1,100 analysts. Its business scope includes financial institutions, enterprises, sovereigns, local governments, and structured finance ratings. To date, Fitch has completed ratings for over 1,600 financial institutions, 1,000 enterprises, 1,400 local governments, 78% of structured finance globally, and sovereign ratings for 70 countries. Its rating results are recognized by regulatory agencies and bond investors worldwide. Fitch Bohua Credit Rating Co., Ltd. is a wholly-owned subsidiary of Fitch in China, established to conduct onshore market credit rating services and is committed to better serving the Chinese capital market.



Challenges

Fitch Bohua, a subsidiary of a global rating agency, runs its website and reports on AWS public cloud. To meet industry and compliance needs, it ensures data security, system reliability, and disaster recovery.

The company focuses on optimizing its cloud environment to improve efficiency, reduce costs, and regularly evaluates its technology and expenses to meet both technical and financial goals.

Services

Customized Cloud Architecture Design: Designed and implemented a customized cloud infrastructure tailored to Fitch Bohua's specific business needs.

Continuous Operations Monitoring and Management: Ensured high system availability and performance optimization while providing real-time monitoring and rapid response to potential issues.

Cost Optimization and Management: Achieved significant operational cost savings through effective resource management and cost control strategies.

Cloudfit Subscription: Leveraged Cloudfit's professional modules for resource management, FinOps, and SecOps to provide comprehensive support for MSP services.

Benefits

- Professional Operations Support
- Cost Optimization
- Performance Improvement
- Maximized Resource Utilization
- Security and Compliance
- Disaster Recovery
- Scalability
- Strategic Consulting